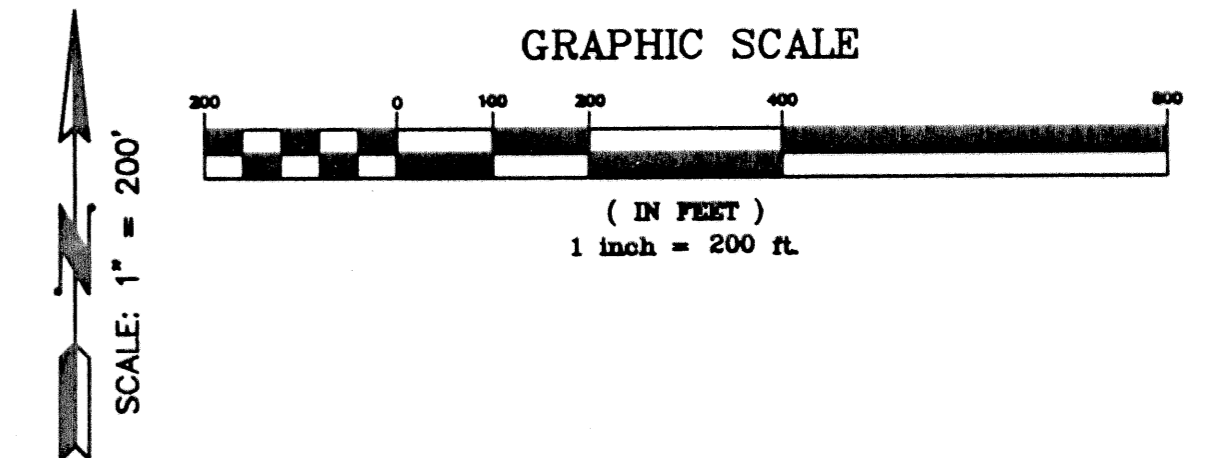


BOCA TECHNOLOGY CENTER PLAT 1

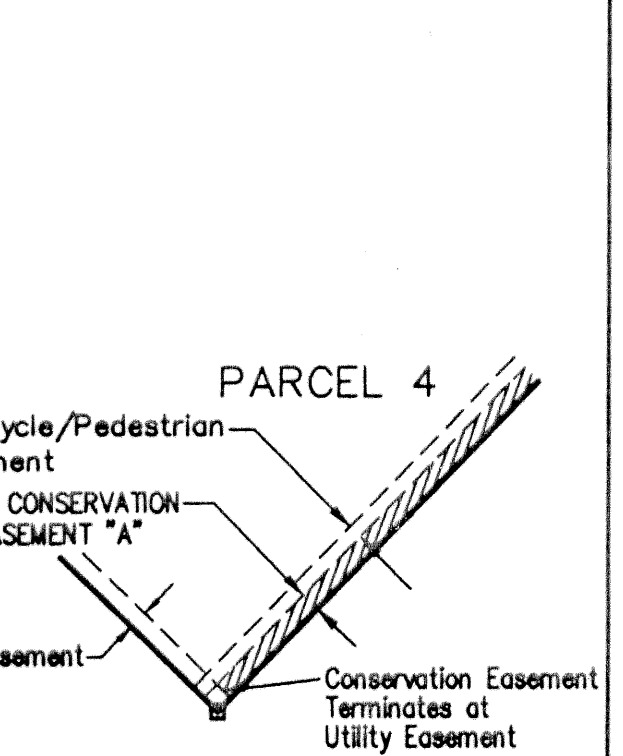
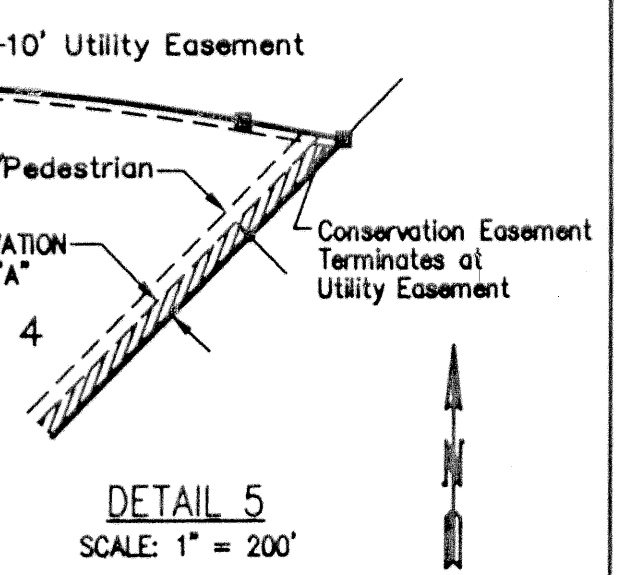
LYING IN SECTION 12, TOWNSHIP 47 SOUTH, RANGE 42 EAST
AND SECTION 7, TOWNSHIP 47 SOUTH, RANGE 43 EAST
CITY OF BOCA RATON, PALM BEACH COUNTY, FLORIDA
SHEET NO. 3 OF 4

MICHAEL G. PURMORT & ASSOCIATES, INC.
DEERFIELD BEACH, FLORIDA
MAY 2002



STATE OF FLORIDA
COUNTY OF PALM BEACH
This plat was filed for record at _____ M. this _____ day of _____ 2002, and duly recorded in Plat Book No. _____ on Pages _____ thru _____.
DOROTHY H. WILKEN
Clerk Circuit Court
By _____ D.C.

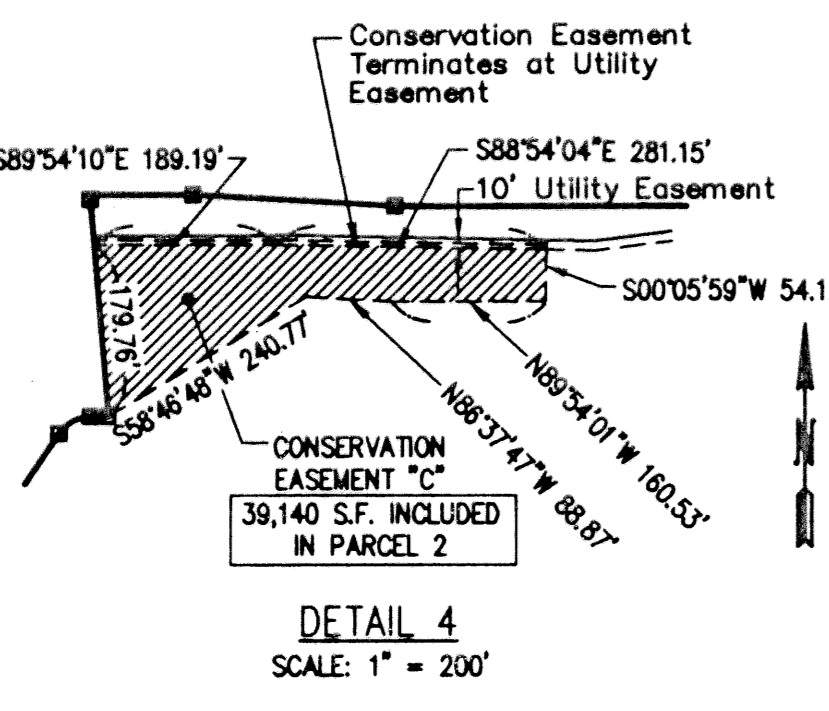
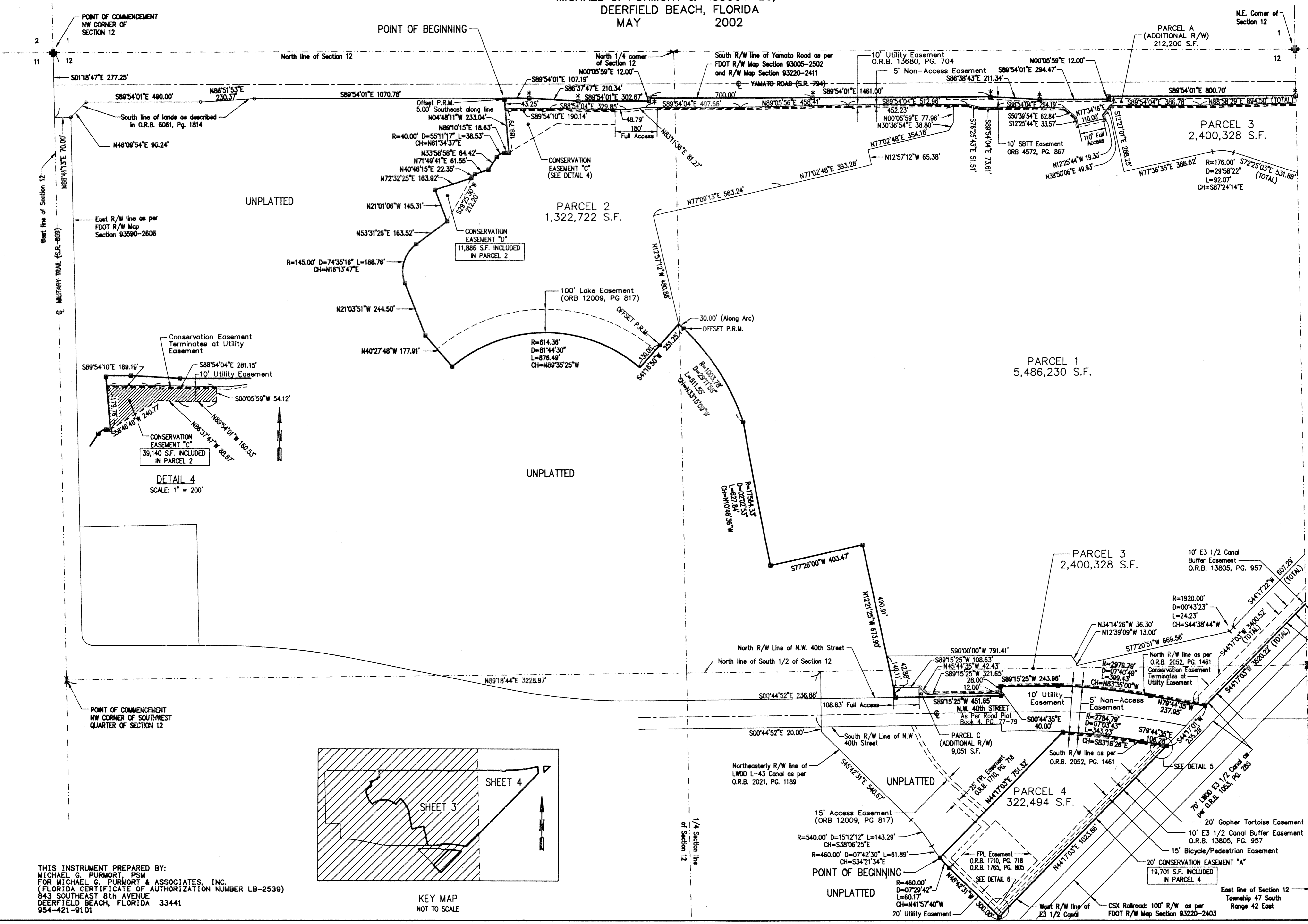
NOTE: *
ASTERISK SYMBOL INDICATES OFFSET P.R.M.
SET 500'05"59" W 5.00' FROM CORNER



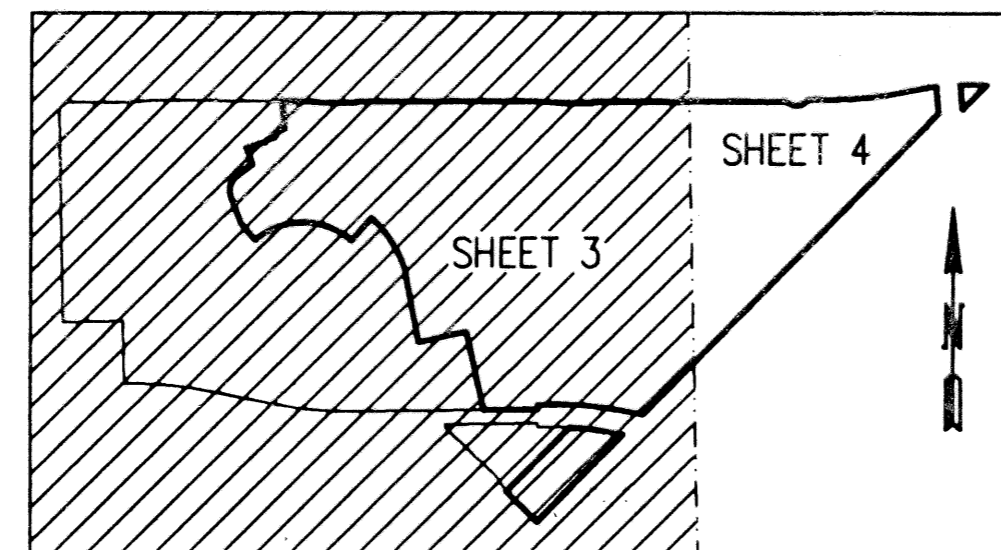
DETAIL 6
SCALE: 1" = 200'

LEGEND

☉	CENTERLINE
—	RIGHT-OF-WAY
S.R.	STATE ROAD
FDOT	FLORIDA DEPARTMENT OF TRANSPORTATION
LWDD	LAKE WORTH DRAINAGE DISTRICT
FPL	FLORIDA POWER & LIGHT
S.B.T.	SOUTHERN BELL TELEPHONE
O.R.B.	OFFICIAL RECORD BOOK
S.F.	SQUARE FEET
P.G.	PAGE
D	CENTRAL ANGLE
R	RADIUS
L	ARC LENGTH
CH	CHORD BEARING
■	PERMANENT REFERENCE MONUMENT (P.R.M.)



DETAIL 4
SCALE: 1" = 200'



KEY MAP
NOT TO SCALE

THIS INSTRUMENT PREPARED BY:
MICHAEL G. PURMORT, PSM
FOR MICHAEL G. PURMORT & ASSOCIATES, INC.
(FLORIDA CERTIFICATE OF AUTHORIZATION NUMBER LB-2539)
843 SOUTHEAST 8th AVENUE
DEERFIELD BEACH, FLORIDA 33441
954-421-9101

COMPUTED JAD
DRAWN JAD
CHECKED _____
APPROVED _____
JOB NO. 20-152

H:\20152.00\Survey\PLAT1\PLAT1-MAP.dwg Plot Scale: 1"=200.0 Xref Dwg #: 7/10/2002 4:54 pm By: jadv Date Updated: 7/10/2002 4:54 pm